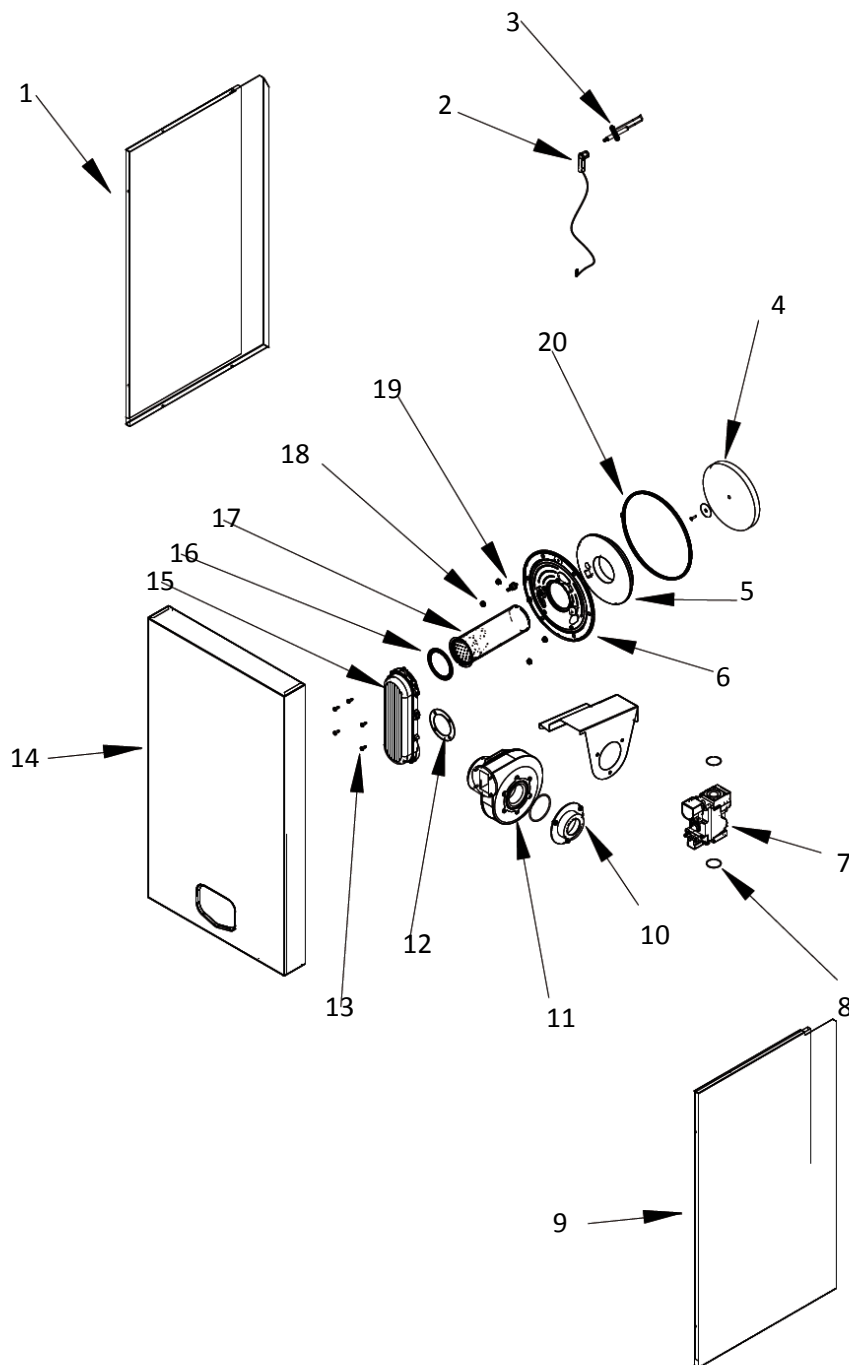


ECOFORCE™ SPARE PARTS LIST

For use on water heater serial numbers starting E65.014.2** ONLY

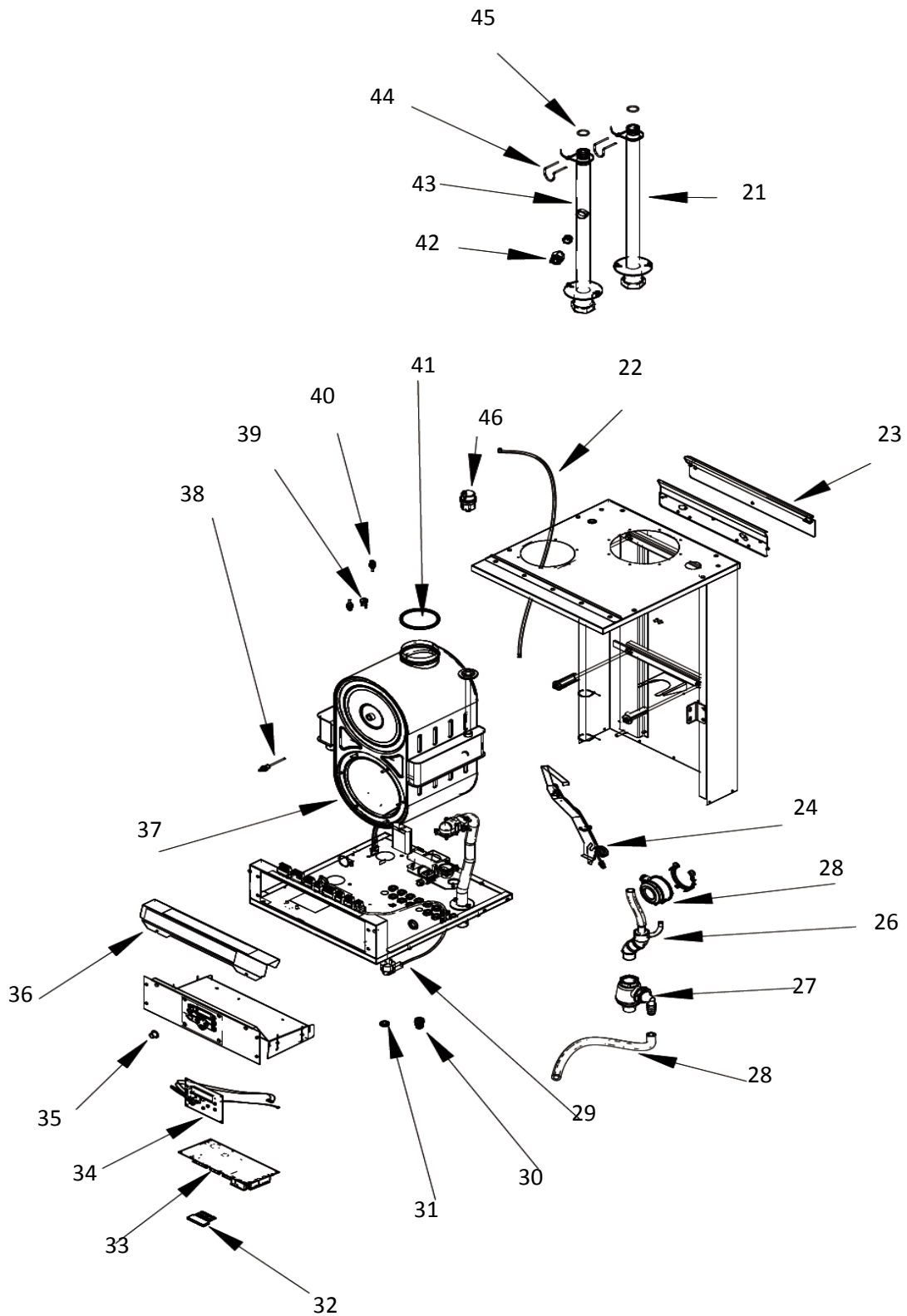
EF80-120



ECOFORCE™ SPARE PARTS LIST

For use on water heater serial numbers starting E65.014.2** ONLY

EF80-120



ECOFORCE™ SPARE PARTS LIST

For use on water heater serial numbers starting E65.014.2** ONLY

| Item No | Description of item | Item Comments | EF80 | EF100 | EF120 |
|---------|---|--|------------|------------|---------------------------------------|
| 1 | LH SIDE PANEL | | | LE01000298 | |
| 2 | IGNITION CABLE | | | LE04016583 | |
| 3 | ELECTRODE SET | | | LE04000372 | |
| 4 | COMBUSTION CHAMBER REAR WALL INSULATION | | | LE04000213 | |
| 5 | BURNER DOOR INSULATION | | | LE07010093 | |
| 6 | BURNER DOOR | | | LE04000056 | |
| 7 | GAS VALVE | | | LE04000188 | LE04000237 |
| 8 | GAS VALVE O RING | EF120 requires extra o rings and gaskets | | LE07002018 | LEO7002018 LEO7000237 E07001101 |
| 9 | RH SIDE PANEL | | | LE01000299 | |
| 10 | GAS AIR MIXING BOX | | | LE05000087 | |
| 11 | COMBUSTION FAN | | | LE04000069 | |
| 12 | COMBUSTION PIPE GASKET | | | LE07001049 | |
| 13 | SET ROUND HEAD SCREWS X5 | | | LE06023002 | |
| 14 | FRONT PANEL INSULATION | | | LE01000319 | |
| 15 | GAS/AIR INLET PIPE | | | LE03000160 | |
| 16 | BURNER GASKET | | | LE07001029 | |
| 17 | BURNER | | | LE04012025 | |
| 18 | SET NUTS WITH FLANGE | | | LE06023001 | |
| 19 | BURNER DOOR THERMOSTAT | | | LE04016667 | |
| 20 | BURNER DOOR OUTER SEAL | | | LE07004035 | |
| 21 | INLET PIPE KIT | | LE02000107 | LE02000109 | |
| 22 | CONDENSATE HOSE | | | LE04007110 | |
| 23 | MOUNTING BRACKET | | | LE01001014 | |
| 24 | BRACKET | | LE01000287 | LE01000288 | |
| 25 | AIR PRESSURE SWITCH | | | LE04000305 | |

ECOFORCE™ SPARE PARTS LIST

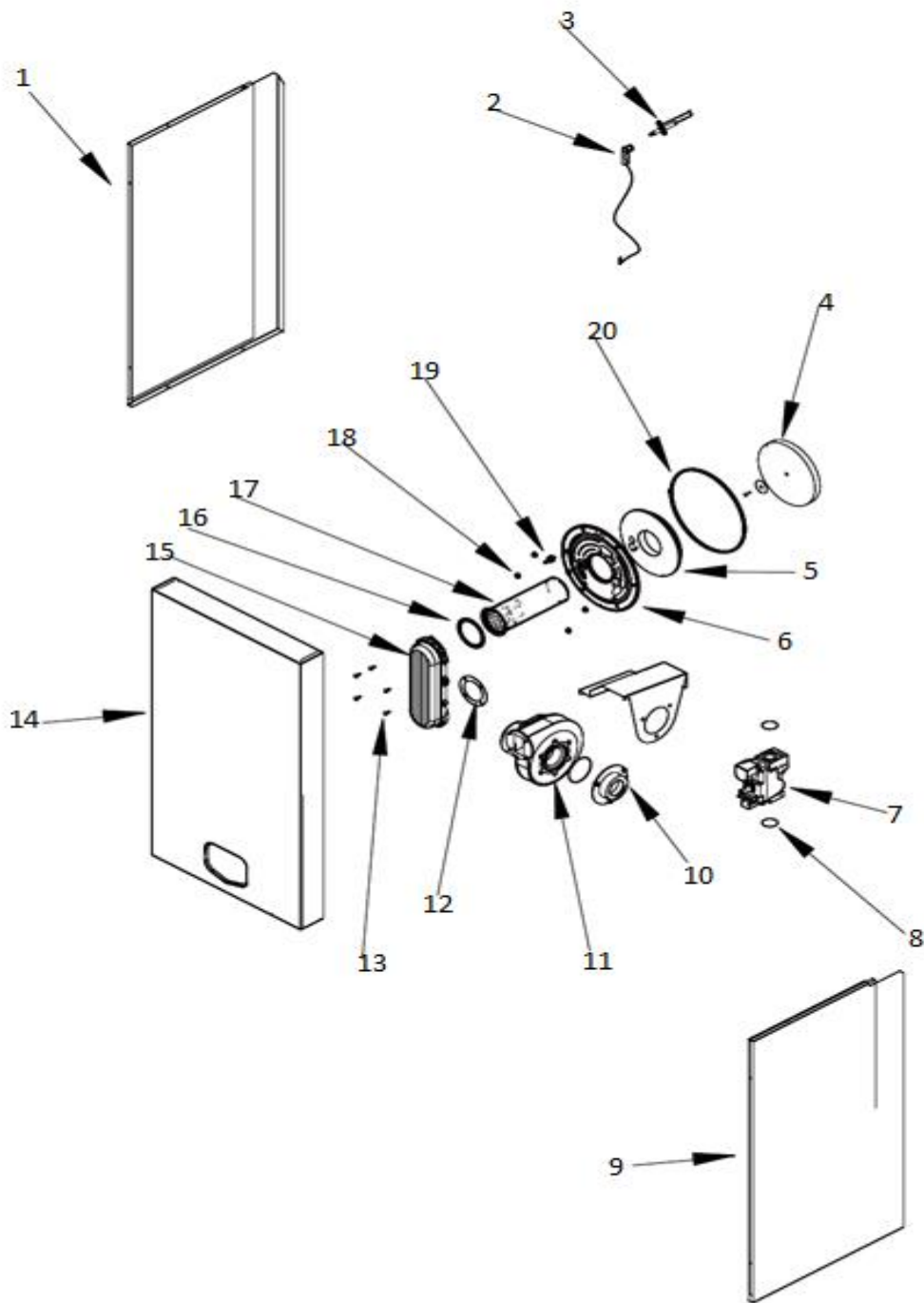
For use on water heater serial numbers starting E65.014.2** ONLY

| Item No | Description of item | Item Comments | EF80 | EF100 | EF120 |
|---------|------------------------------|---------------|------------|-------------|------------|
| 26 | CONDENSATE DRAIN CONNECTION | | | LE05000135 | |
| 27 | CONDENSATE WATER TRAP | | | LE05000115 | |
| 28 | CONDENSATE DRAIN HOSE | | | LE04007038 | |
| 29 | 230V NET CABLE | | | LE04016142 | |
| 30 | PG9 SWIVEL AND CABLE GLAND | | | LE05000064 | |
| 31 | 18-5MM GROMETT | | | LE04010031 | |
| 32 | 5A FUSE | | | LE04016582 | |
| 33 | BURNER CONTROL | | | LE1001EN014 | |
| 34 | DISPLAY PCB | | | LE04000224 | |
| 35 | RUBBER PLUG | | | LE05001062 | |
| 36 | CONNECTOR STRIP COVER | | | LE01000317 | |
| 37 | HEAT EXCHANGER | | LE04000285 | LE04000286 | LE04000287 |
| 38 | FLUE GAS TEMPERATURE SENSOR | | | LE04016621 | |
| 39 | HIGH LIMIT THERMOSTAT | | | LE04016066 | |
| 40 | FLOW/RETURN TEMP- SENSOR | | | LE04016287 | |
| 41 | HEAT EXCHANGER OUTLET SEAL | | LE07004030 | LE07004031 | |
| 42 | HIGH PRESSURE WATER SWITCH | | | LE04015081 | |
| 43 | OUTLET PIPE KIT | | LE02000112 | LE02000110 | |
| 44 | HEAT EXCHANGER PIPE CLIP | | LE09002021 | LE09002022 | |
| 45 | HEAT EXCHANGER INLET O RINGS | | LE07002032 | LE07002033 | |
| 46 | AUTOMATIC AIR VENT | | | LE04015073 | |

ECOFORCE™ SPARE PARTS LIST

For use on water heater serial numbers starting E65.014.2** ONLY

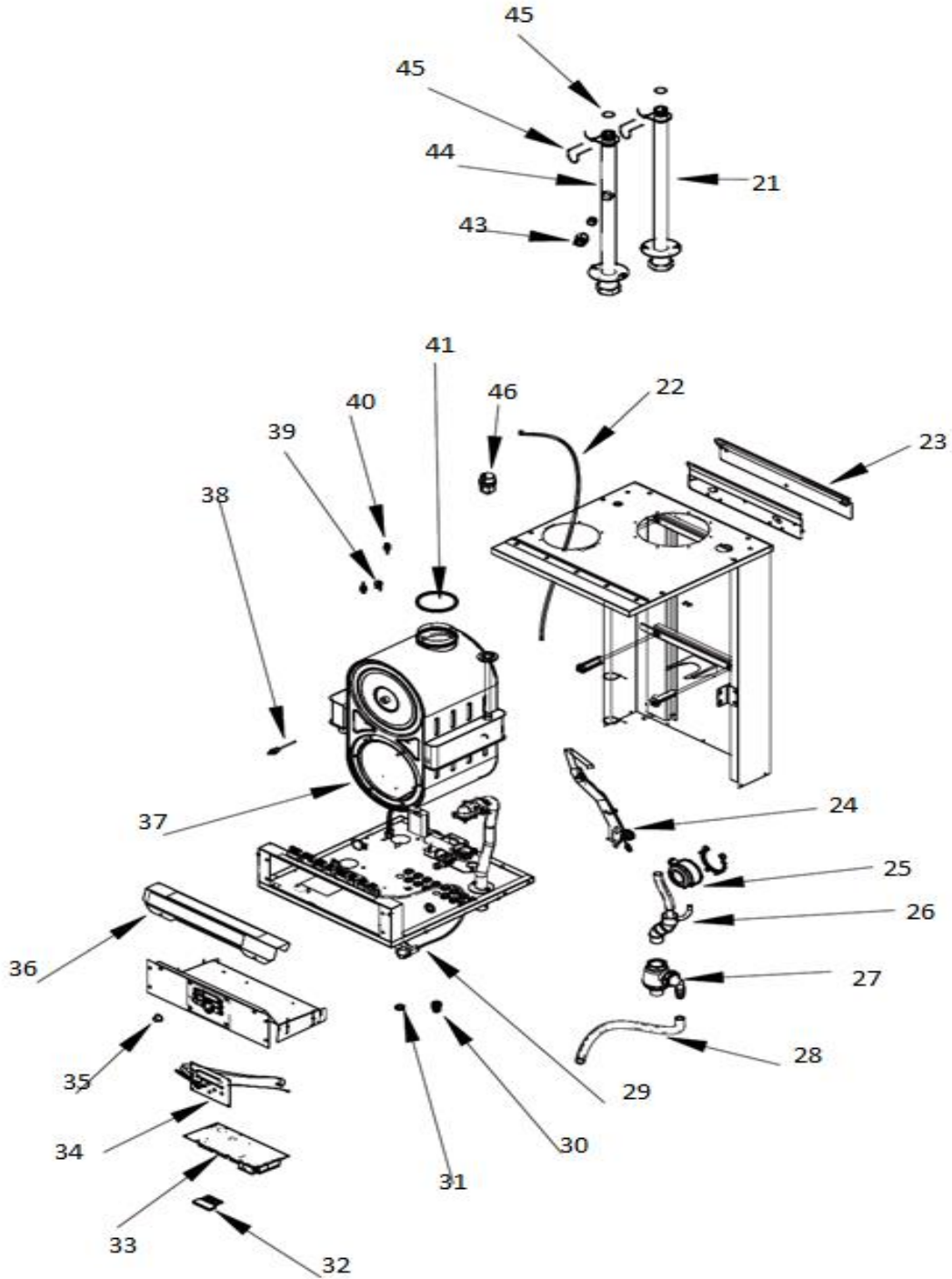
EF150-180



ECOFORCE™ SPARE PARTS LIST

For use on water heater serial numbers starting E65.014.2** ONLY

EF150-180



ECOFORCE™ SPARE PARTS LIST

For use on water heater serial numbers starting E65.014.2** ONLY

| Item No | Description of item | Item Comments | EF150 | EF180 |
|---------|---|--|------------|------------|
| 1 | LH SIDE PANEL | | | LE01000315 |
| 2 | IGNITION CABLE | | | LE04016583 |
| 3 | ELECTRODE SET | | | LE04000372 |
| 4 | COMBUSTION CHAMBER REAR WALL INSULATION | | | LE04000213 |
| 5 | BURNER DOOR INSULATION | | | LE07010093 |
| 6 | BURNER DOOR | | | LE04000056 |
| 7 | GAS VALVE | | | LE04000190 |
| 8 | GAS VALVE O RING | | | LE07002018 |
| 9 | RH SIDE PANEL | | | LE01000316 |
| 10 | GAS AIR MIXING BOX | | | LE05000090 |
| 11 | COMBUSTION FAN | | | LE04000070 |
| 12 | COMBUSTION PIPE GASKET | | | LE07001039 |
| 13 | SET ROUND HEAD SCREWS X5 | | | LE06023002 |
| 14 | FRONT PANEL INSULATION | | | LE01000320 |
| 15 | GAS/AIR INLET PIPE | | | LE03000161 |
| 16 | BURNER GASKET | | | LE07001029 |
| 17 | BURNER | For EF180 Do not order without referring to product bulletin 19 02 | LE04012028 | LE04012043 |
| 18 | SET NUTS WITH FLANGE | | | LE06023001 |
| 19 | BURNER DOOR THERMOSTAT | | | LE04016667 |
| 20 | BURNER DOOR OUTER SEAL | | | LE07004035 |
| 21 | INLET PIPE KIT | | | LE02000111 |
| 22 | CONDENSATE HOSE | | | LE04007110 |
| 23 | MOUNTING BRACKET | | | LE01001014 |
| 24 | BRACKET | | | LE01000288 |
| 25 | AIR PRESSURE SWITCH | | | LE04000305 |

ECOFORCE™ SPARE PARTS LIST

For use on water heater serial numbers starting E65.014.2** ONLY

| Item No | Description of item | Item Comments | EF150 | EF180 |
|---------|------------------------------|---------------|------------|-------------|
| 26 | CONDENSATE DRAIN CONNECTION | | | LE05000135 |
| 27 | CONDENSATE WATER TRAP | | | LE05000115 |
| 28 | CONDENSATE DRAIN HOSE | | | LE04007038 |
| 29 | 230V NET CABLE | | | LE04016142 |
| 30 | PG9 SWIVEL AND CABLE GLAND | | | LE05000064 |
| 31 | 18-5MM GROMETT | | | LE04010031 |
| 32 | 5A FUSE | | | LE04016582 |
| 33 | BURNER CONTROL | | | LE1002EN014 |
| 34 | DISPLAY PCB | | | LE04000224 |
| 35 | RUBBER PLUG | | | LE05001062 |
| 36 | CONNECTOR STRIP COVER | | | LE01000317 |
| 37 | HEAT EXCHANGER | | LE04000288 | LE04000289 |
| 38 | FLUE GAS TEMPERATURE SENSOR | | | LE04016621 |
| 39 | HIGH LIMIT THERMOSTAT | | | LE04016066 |
| 40 | FLOW/RETURN TEMP- SENSOR | | | LE04016287 |
| 41 | HEAT EXCHANGER OUTLET SEAL | | | LE07004025 |
| 42 | HIGH PRESSURE WATER SWITCH | | | LE04015081 |
| 43 | OUTLET PIPE KIT | | | LE02000114 |
| 44 | HEAT EXCHANGER PIPE CLIP | | | LE09002023 |
| 45 | HEAT EXCHANGER INLET O RINGS | | | LE07002034 |
| 46 | AUTOMATIC AIR VENT | | | LE04015073 |